

VX 系列电磁阀
VX Series Solenoid Valve



订购码
Ordering code

VX

规格代码
Specification code

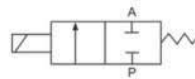
06

接管口径
Port size
06:G1/8"
08:G1/4"
10:G3/8"
15:G1/2"

AC110V

标准电压
Standard voltage
DC12V DC24V
AC24V 50Hz/60Hz
AC110V 50Hz/60Hz
AC220V 50Hz/60Hz
AC380V 50Hz/60Hz

符号
Symbol

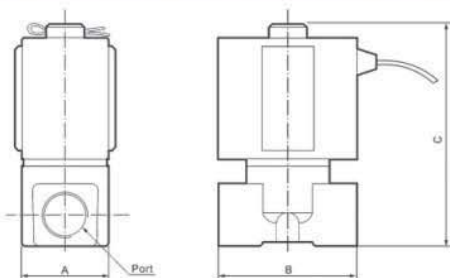


规格
Specifications

型号 Model	VX2120-06	VX2120-08	VX2120-10	VX2120-15
工作介质 Fluid	空气、水、蒸汽 Air, Water, Steam			
动作方式 Acting type	直动式 Direct drive type			
型式 Type	常闭型 Normal close-type			
流量孔径mm Aperture of flow rate	3		13	
接管口径 Port size	G1/8"	G1/4"	G3/8"	G1/2"
使用压力 Working pressure	0~1.0MPa			
工作温度范围 Working temperature range	-5~+150℃		-5~-80℃	
油封材质 Material of oil seal	VITON		NBR	

*特殊电压及特殊规格请与厂房接洽
*Please contact Factory for special voltage and Specification

尺寸
Dimensions



型号 Model	口径 Port	A	B	C
VX2120-06	G1/8"	25	40	64
VX2120-08	G1/4"	25	40	64
VX2120-10	G3/8"	48	68	110
VX2120-15	G1/2"	48	68	110