



QE系列快速排气阀
QE Series Quick Exhaust Valve



订购码
Ordering code

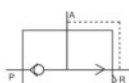
QE

系列代码
QE:快速排气阀
Series code
QE:Rapid venting valve

01

接管口径
Button type
01:G1/8"
02:G1/4"
03:G3/8"
04:G1/2"
06:G3/4"

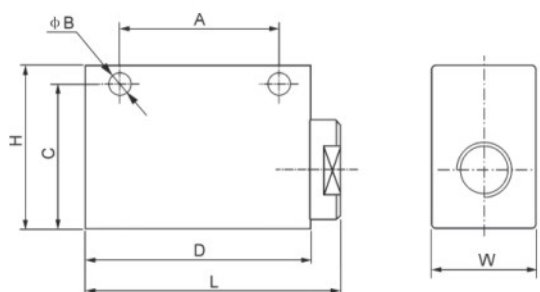
符号
Symbol



规格
Specifications

型号 Model	QE-01	QE-01	QE-01	QE-01	QE-01
工作介质 Working medium	空气 Air				
有效截面积 mm ² Net sectional area	16mm ²	27.5mm ²	28mm ²	71mm ²	72.5mm ²
接管口径 Port size	G1/8"	G1/4"	G3/8"	G1/2"	G3/4"
使用压力范围 Working pressure range	0~0.8MPa				
使用温度范围 Operating temperature range	0~60℃				

尺寸
Dimensions



符号/型号 Symbol / Model	口径 size	L	W	H	A	B	C	D
QE-1	G1/8"	46	20	32	30	4.3	27	40
QE-2	G1/4"	62	25	40	39	5.6	33.5	55
QE-3	G3/8"	62	25	40	39	5.6	33.5	55
QE-4	G1/2"	98	38	64	60	8.5	51	90
QE-5	G3/4"	98	38	64	60	8.5	51	90